

Working on Health Equity

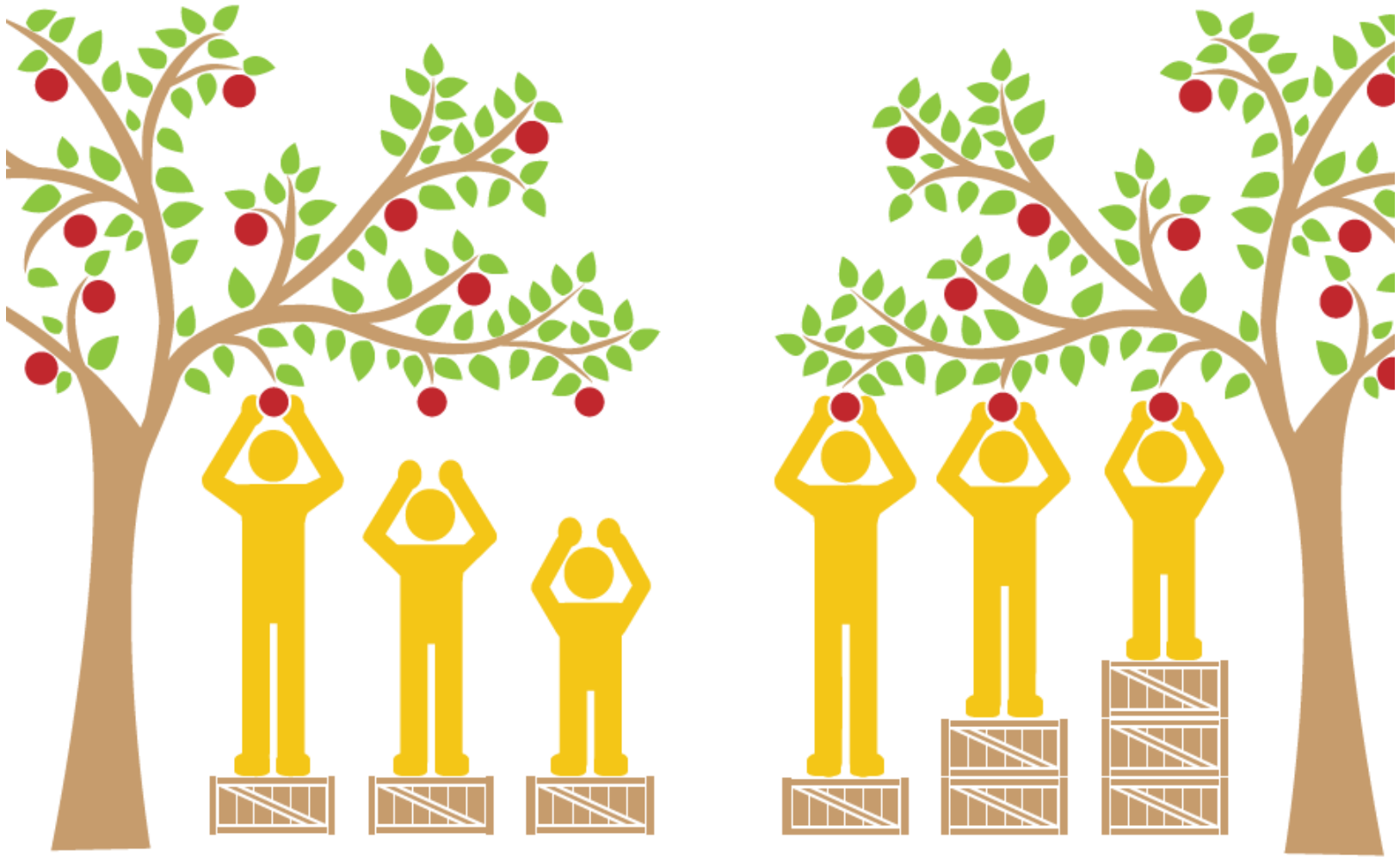
CPAA Consumer Advisory Committee

10/24/2017

Definitions

Health equity means that everyone has a fair and just opportunity to be as healthy as possible. This requires removing obstacles to health such as poverty, discrimination, and their consequences, including powerlessness and lack of access to good jobs with fair pay, quality education and housing, safe environments, and health care.

For the purposes of measurement, **health equity** means reducing and ultimately eliminating disparities in health and its determinants that adversely affect excluded or marginalized groups.



Equality

doesn't mean

Equity

What undermines equity

- Implicit Bias
- -isms (discrimination)
- Structural inequity

Your zip code is a bigger determinant of health than your genetic code

How do you work on equity?

- Understand disparities and their causes
- Analyze gaps and resources in context
- Develop a habit of thinking and decision making
- Focus your impact
- Measure results

What this means for the Consumer Advisory Committee

- Committee is asked to think about advancing health equity when providing input on projects, work group products, strategic direction, etc.
- Committee will be asked to assess health equity implications in all recommendations and feedback

Health Equity Definition:

Health equity means that everyone has a fair and just opportunity to be as healthy as possible. This requires removing obstacles to health such as poverty, discrimination, and their consequences, including powerlessness and lack of access to good jobs with fair pay, quality education and housing, safe environments, and health care.

For the purposes of measurement, **health equity** means reducing and ultimately eliminating disparities in health and its determinants that adversely affect excluded or marginalized groups.