

ACH Measurement: Chain of Impact



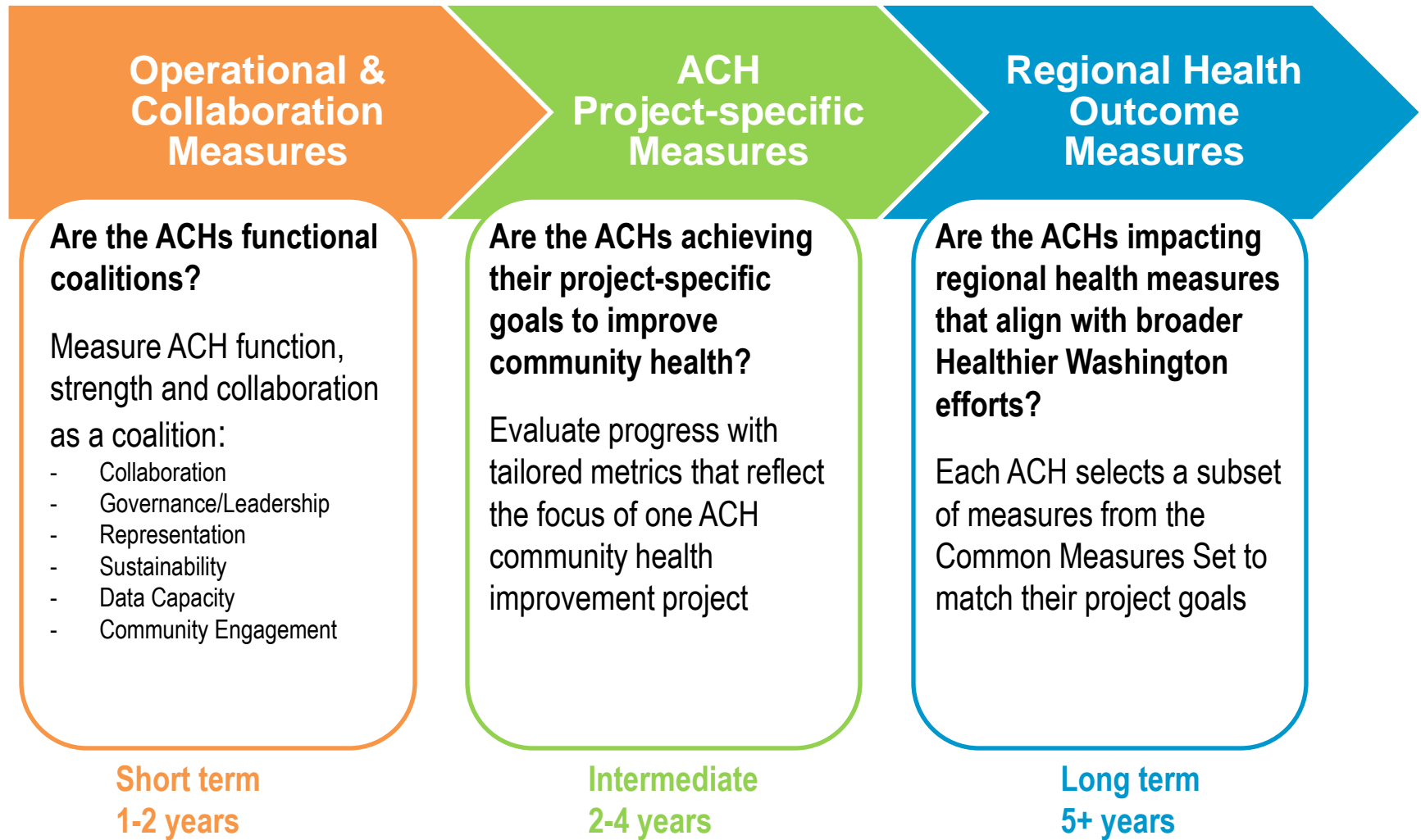
Center for Community Health and Evaluation
February 2016



Measurement Framework Goals

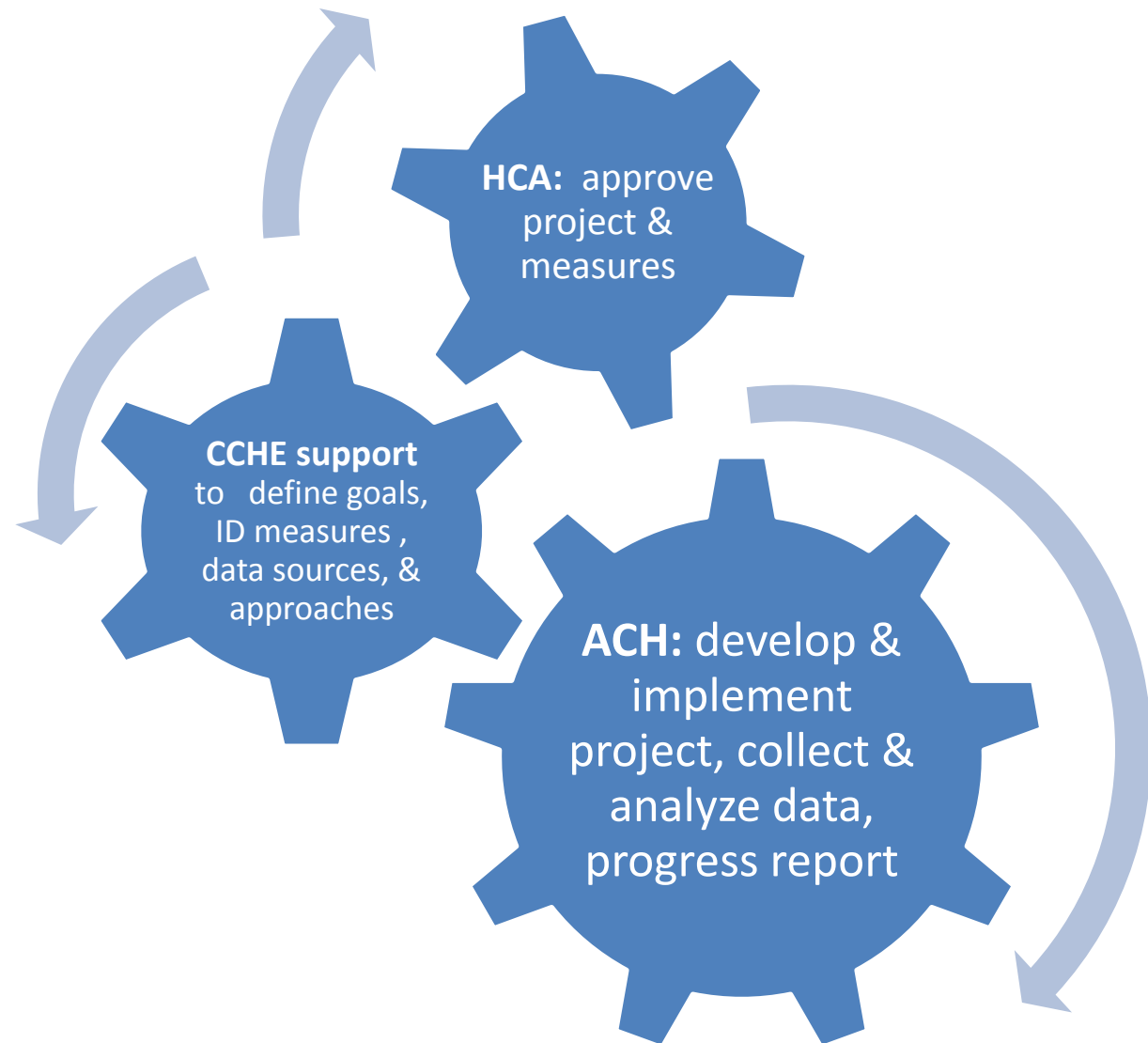
- Document ACH contribution to broader regional health goals (Common Measure Set)
- Tell the story of how the ACH is making an impact
 - Collaborative Action
 - Support the ACH in measuring one ACH project impact
 - Demonstrate an early win
 - Establish guardrails for ACH progress reporting

Measuring the Chain of Impact





ACH Project



Questions?



Erin Hertel
Center for Community Health
and Evaluation

Hertel.e@ghc.org